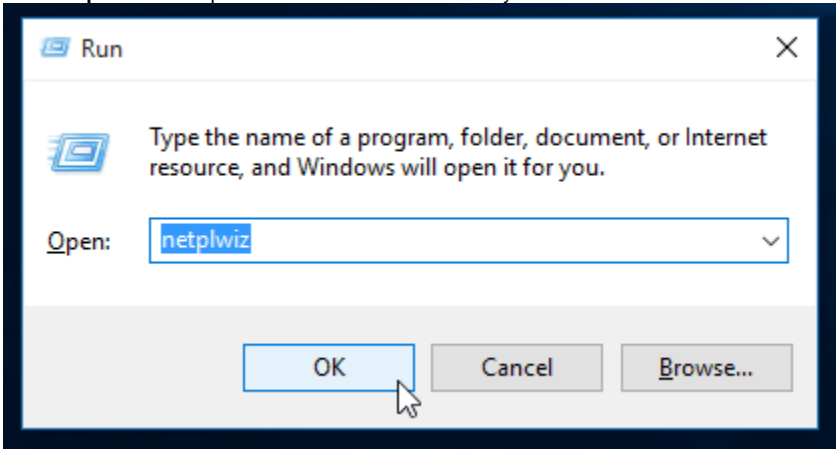


# How-to Autologin a Windows User

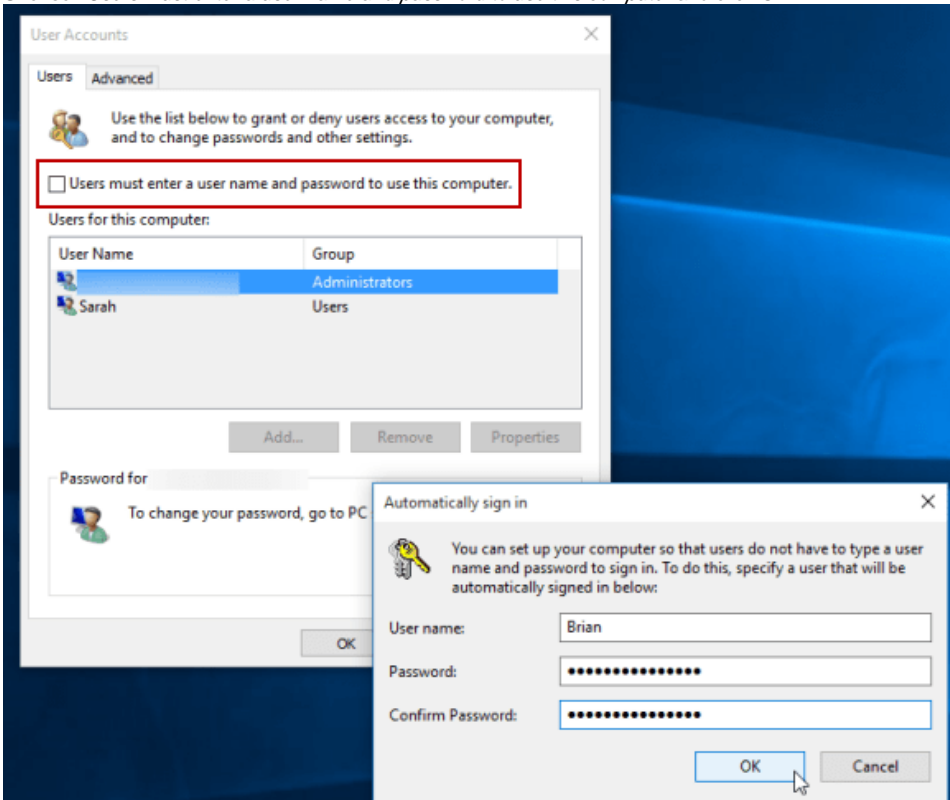
This guide will explain how to allow a user to auto-login on Windows. You will need this guide if you change the username and/or password on your HomeTroller Plus or HomeTroller Pro.

## Procedure

1. Log into your system using your new username and/or password.
2. Go to the start menu and search for **Run**
  - a. Alternatively you can right-click the Start button and select Run from the hidden quick access menu
  - b. Or, use the keyboard shortcut Windows Key+R to bring up the Run dialog.
3. Enter **netplwiz** in the Open field and click OK when ready



4. Uncheck *Users must enter a user name and password to use this computer* and click OK.



5. Enter in your user name and the password you use to log into your system twice and click OK.
6. That's it! Next time your computer reboots, you will not have to login.